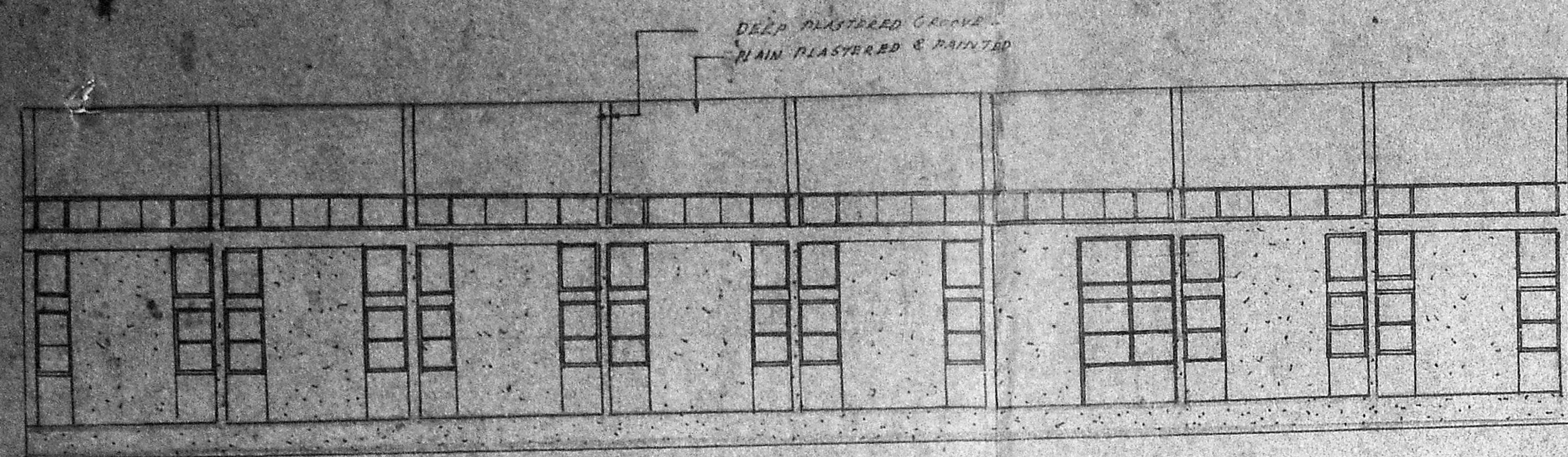
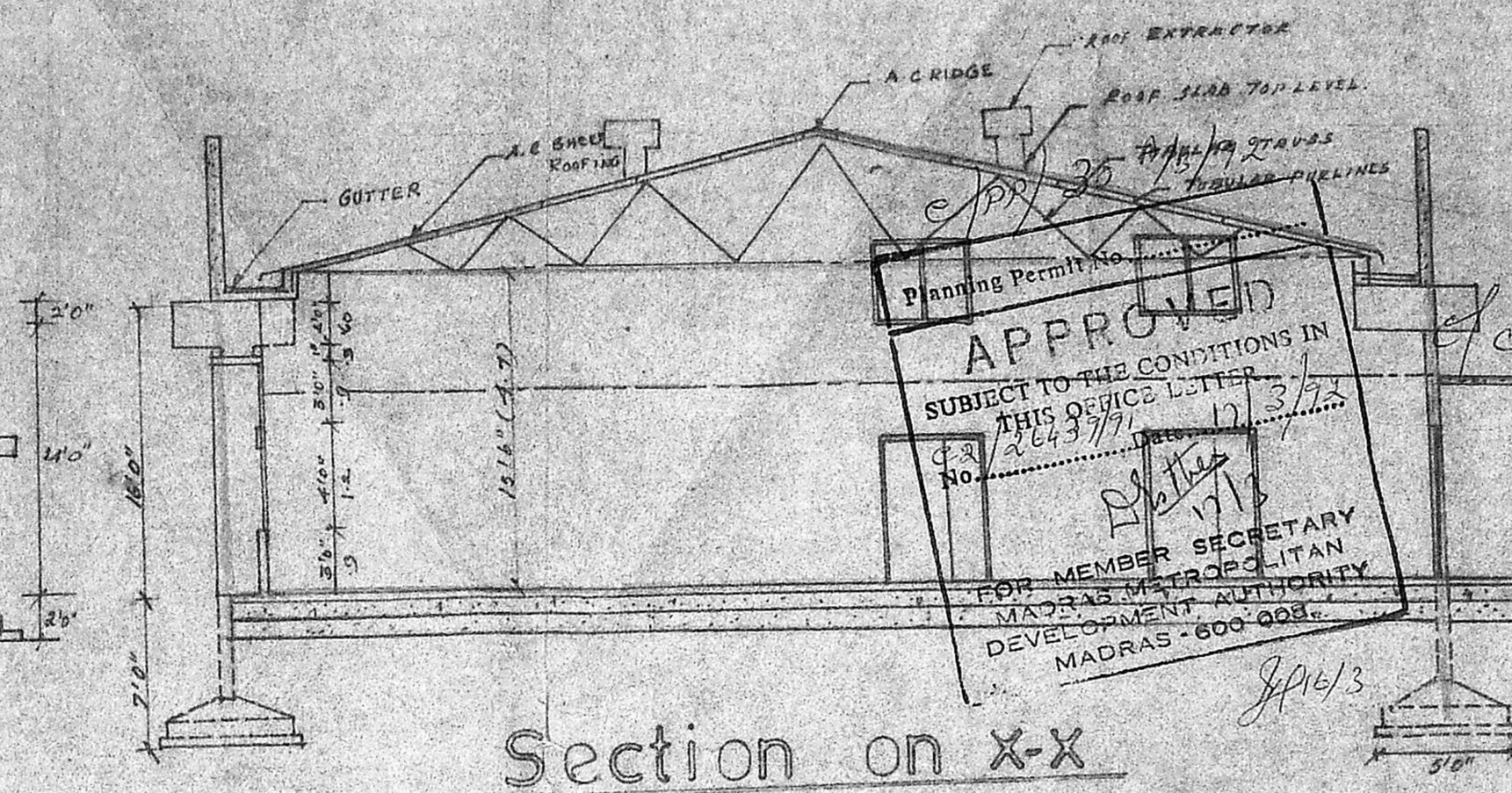


REVISED PLAN SHOWING THE PROPOSED ADDITIONAL CONSTRUCTION OF A RABIA LEATHER INDUSTRIES PRIVATE LIMITED (LEATHER GARMENTS) IN SIDCO INDUSTRIAL ESTATE IN PLOT NO.2 GUINDY MAMBALAM GUINDY T.K

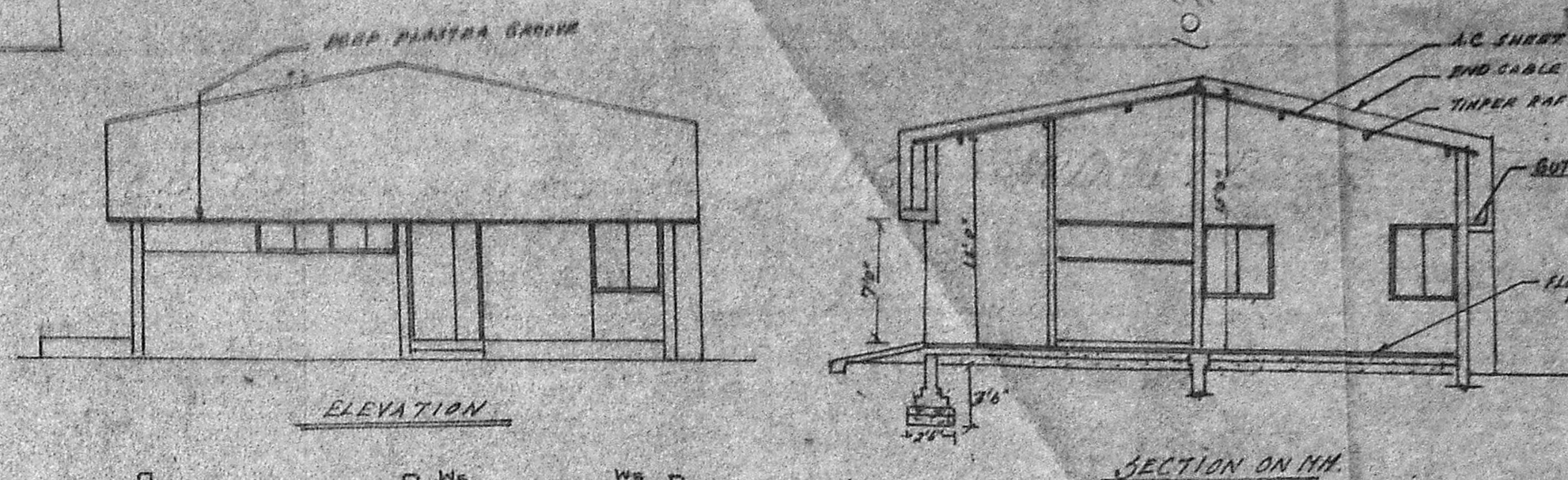
M.M.D.A APPROVED PLAN NO: C2/25219/89 DATED 28/5/90



Elevation

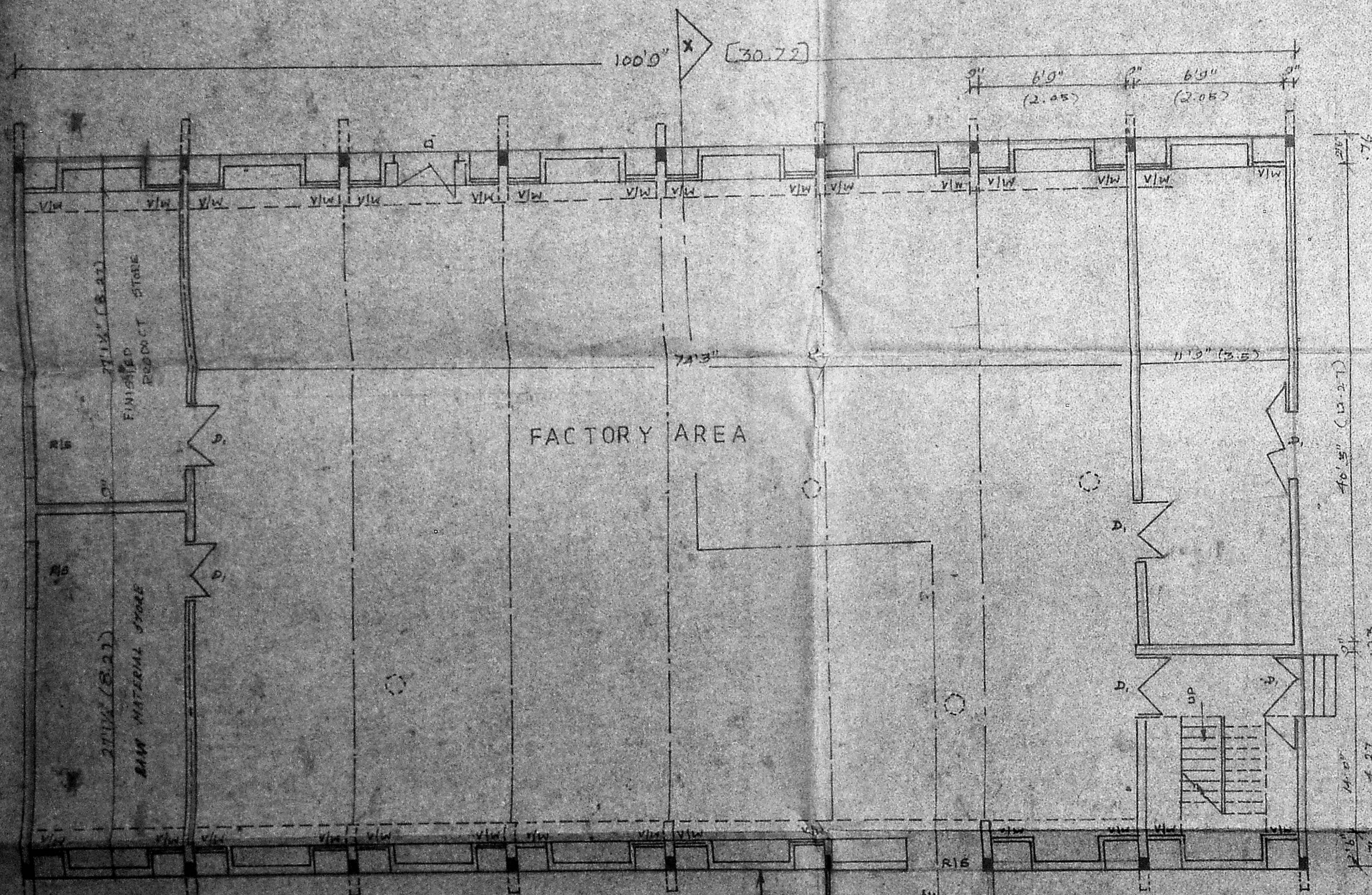


Section on X-X



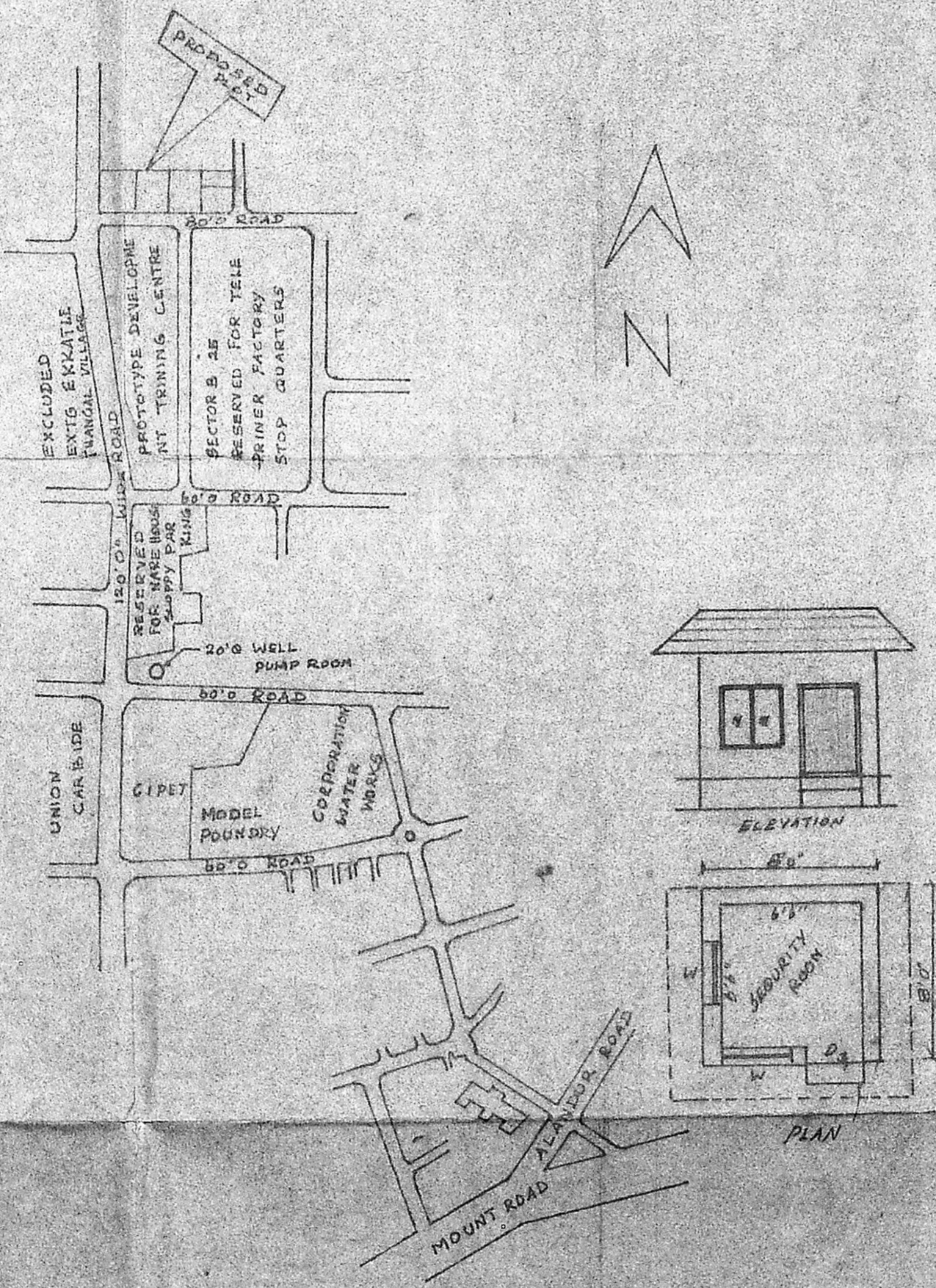
ELEVATION

SECTION ON Y-Y

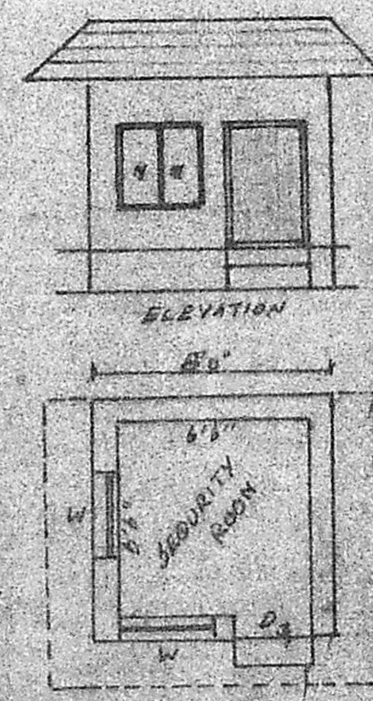


Ground floor Plan

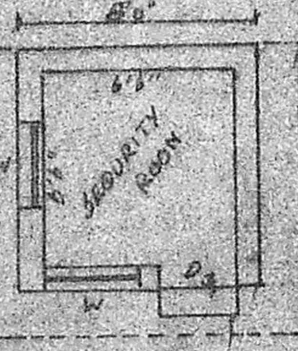
EXISTING OLD BUILDING



Key Plan



ELEVATION



PLAN

PLAN

ELEVATION

PLAN

ELEVATION

PLAN

ELEVATION

PLAN

ELEVATION

PLAN

ELEVATION

PLAN

ELEVATION

PLAN

ELEVATION

PLAN

ELEVATION

PLAN

ELEVATION

PLAN

ELEVATION

PLAN

ELEVATION

PLAN

ELEVATION

PLAN

ELEVATION

PLAN

ELEVATION

PLAN

ELEVATION

PLAN

ELEVATION

PLAN

ELEVATION

PLAN

ELEVATION

PLAN

ELEVATION

PLAN

ELEVATION

PLAN

ELEVATION

PLAN

ELEVATION

PLAN

ELEVATION

PLAN

ELEVATION

PLAN

ELEVATION

PLAN

ELEVATION

PLAN

ELEVATION

PLAN

ELEVATION

PLAN

ELEVATION

PLAN

ELEVATION

PLAN

ELEVATION

PLAN

ELEVATION

PLAN

ELEVATION

PLAN

ELEVATION

PLAN

ELEVATION

PLAN

ELEVATION

PLAN

ELEVATION

PLAN

ELEVATION

PLAN

ELEVATION

PLAN

ELEVATION

PLAN

ELEVATION

PLAN

ELEVATION

PLAN

ELEVATION

PLAN

ELEVATION

PLAN

ELEVATION

PLAN

ELEVATION

PLAN

ELEVATION

PLAN

ELEVATION

PLAN

ELEVATION

PLAN

ELEVATION

PLAN

ELEVATION

PLAN

ELEVATION

PLAN

ELEVATION

PLAN

ELEVATION

PLAN

ELEVATION

PLAN

ELEVATION

PLAN

ELEVATION

PLAN

ELEVATION

PLAN

ELEVATION

PLAN

ELEVATION

PLAN

ELEVATION

PLAN

ELEVATION

PLAN

ELEVATION

PLAN

ELEVATION

PLAN

ELEVATION

PLAN

ELEVATION

PLAN

ELEVATION

PLAN

ELEVATION

PLAN

ELEVATION

PLAN

ELEVATION

PLAN

ELEVATION

PLAN

ELEVATION

PLAN

ELEVATION

PLAN

ELEVATION

PLAN

ELEVATION

PLAN

ELEVATION

PLAN

ELEVATION

PLAN

ELEVATION

PLAN

ELEVATION

PLAN

ELEVATION

PLAN

ELEVATION

PLAN

ELEVATION

PLAN

ELEVATION

PLAN

ELEVATION

PLAN

ELEVATION

PLAN

ELEVATION

PLAN

ELEVATION

PLAN

ELEVATION

PLAN

ELEVATION

PLAN

ELEVATION

PLAN

ELEVATION

PLAN

ELEVATION

PLAN

ELEVATION

PLAN

ELEVATION

PLAN

ELEVATION

PLAN

ELEVATION

PLAN

ELEVATION

PLAN

ELEVATION

PLAN

ELEVATION

PLAN

ELEVATION

PLAN

ELEVATION

PLAN

ELEVATION

PLAN

ELEVATION

PLAN

ELEVATION

PLAN

ELEVATION

PLAN

ELEVATION

PLAN

ELEVATION

PLAN

ELEVATION

PLAN

ELEVATION

PLAN

ELEVATION

PLAN

ELEVATION

PLAN

ELEVATION

PLAN

ELEVATION

PLAN

ELEVATION

PLAN

ELEVATION

PLAN

ELEVATION

PLAN

ELEVATION

PLAN

ELEVATION

PLAN

ELEVATION

PLAN

ELEVATION

PLAN

ELEVATION

PLAN

ELEVATION

PLAN

ELEVATION

PLAN

ELEVATION

PLAN

ELEVATION

PLAN

ELEVATION

PLAN

ELEVATION

PLAN

ELEVATION

PLAN

ELEVATION

PLAN

ELEVATION

PLAN

ELEVATION

PLAN

ELEVATION

PLAN

ELEVATION

PLAN

ELEVATION

PLAN

ELEVATION

PLAN

ELEVATION

PLAN

ELEVATION

PLAN

ELEVATION

PLAN

ELEVATION

PLAN

ELEVATION

PLAN

ELEVATION

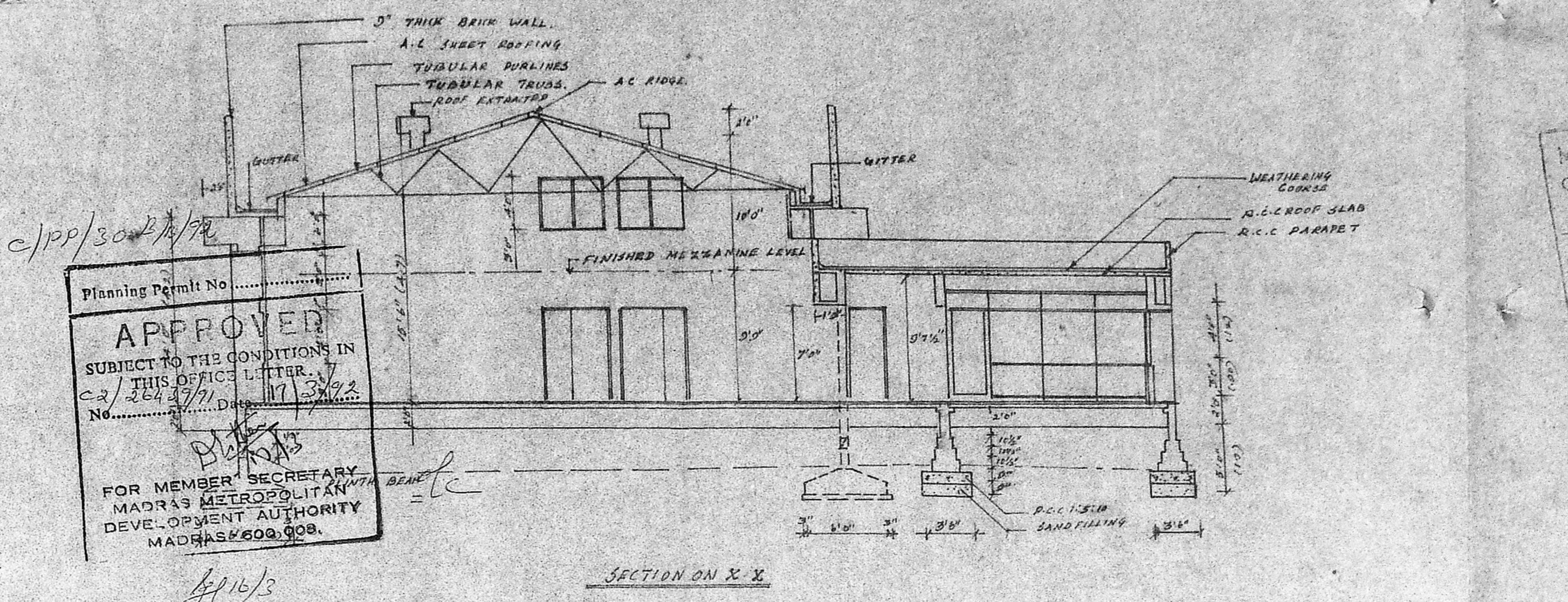
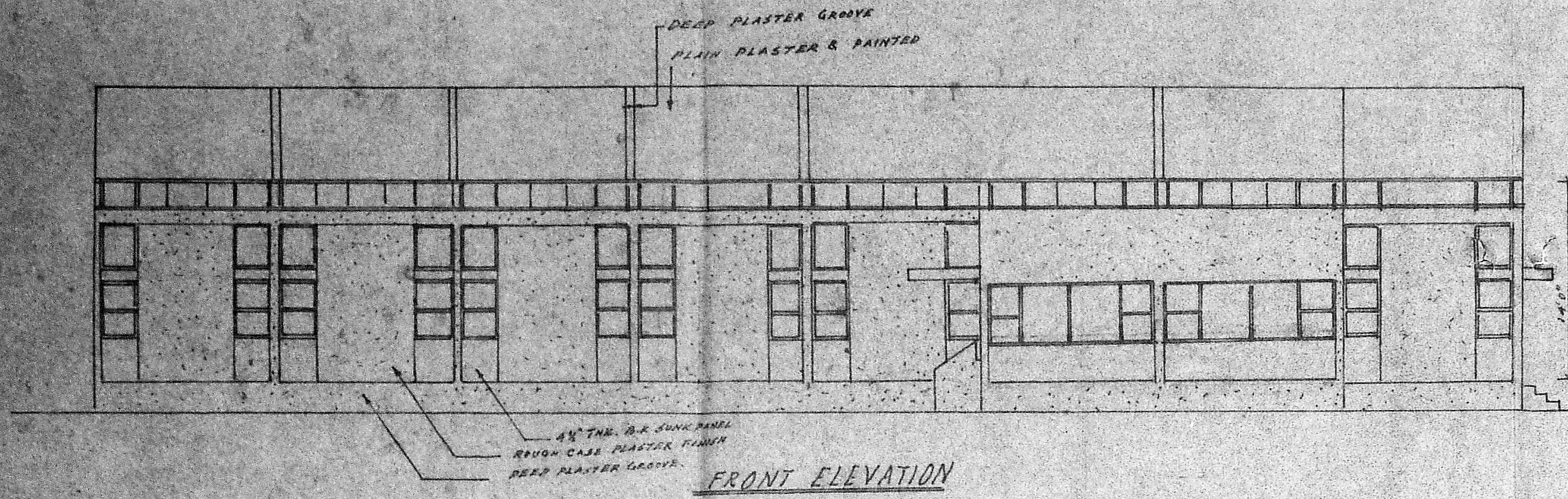
DETAILED PLAN SHOWING THE EXISTING BUILDING OF A RABIA LEATHER INDUSTRIES PRIVATE LIMITED (LEATHER GARMENTS) IN SIDCO INDUSTRIAL ESTATE IN PLOT NO.2 GUINDY MAMBALAM GUINDY T.K. M.M.D.A APPROVED PLAN NO. C2/25219/89 DATED 28/11/90.

SPECIFICATIONS

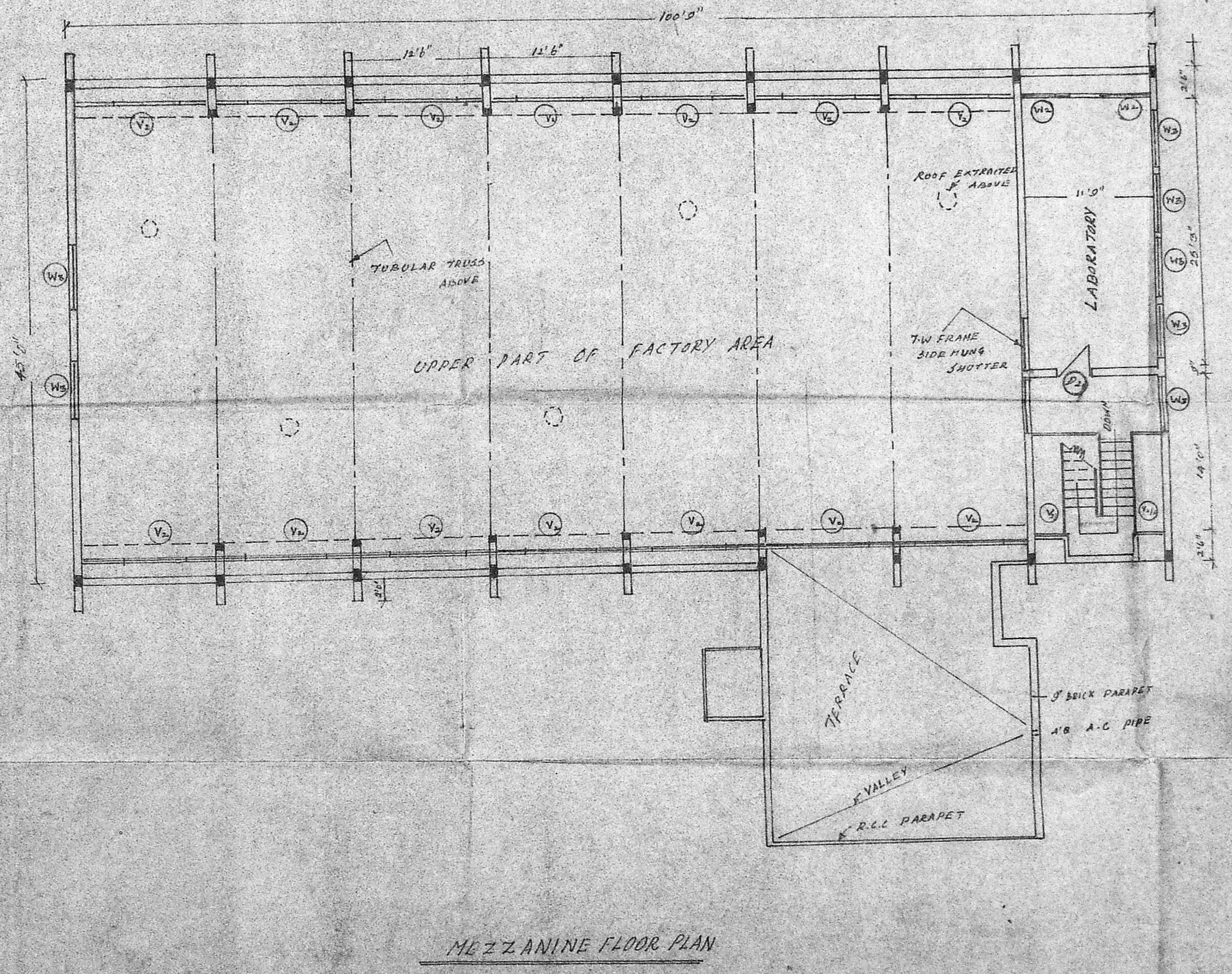
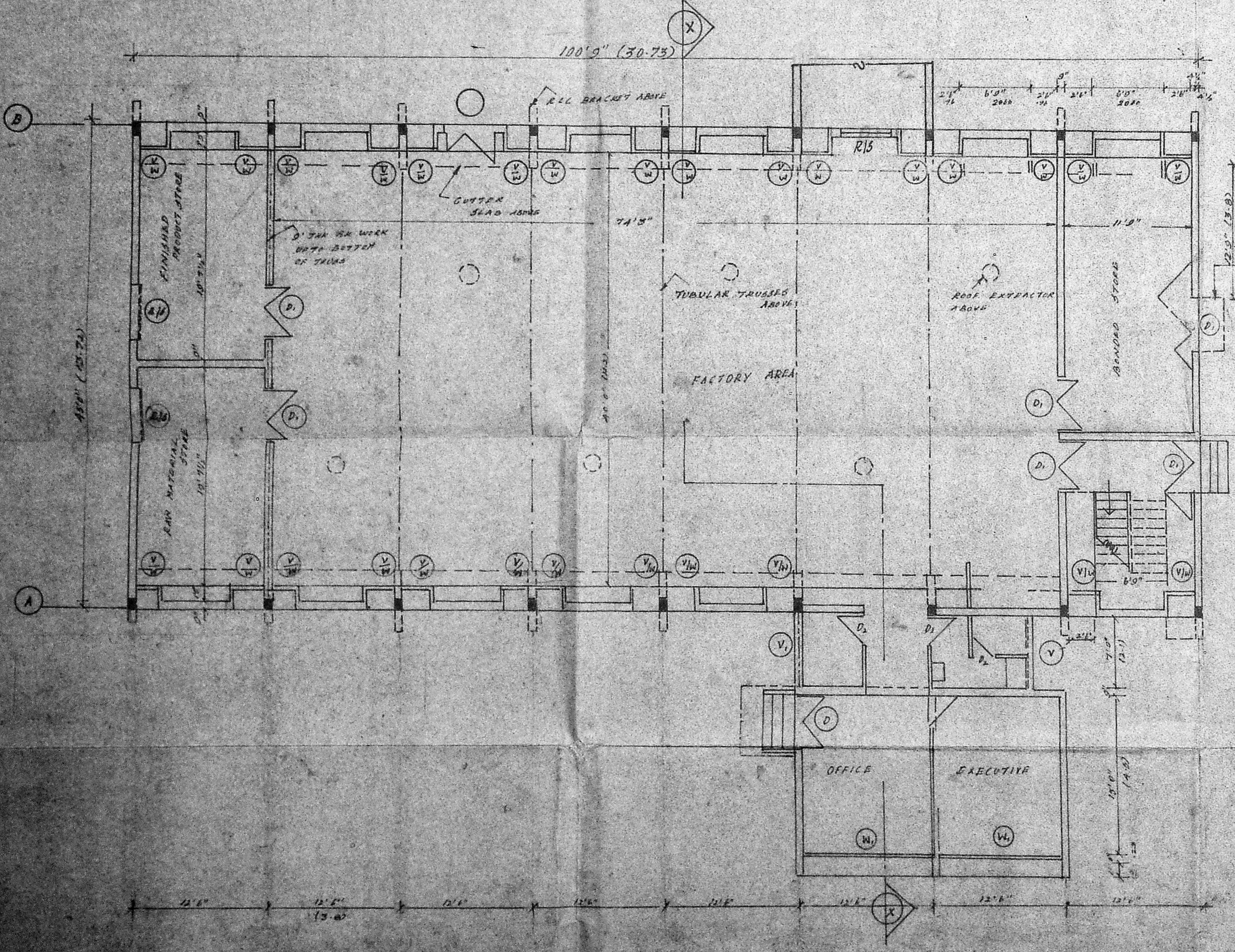
FOUNDATION: R.C.C. SPREAD FOOTING IN 1:2:4 MIX.  
 SUPERSTRUCTURE: R.C.C. FRAME STRUCTURE COLUMN, BEAM, SUNSHADE AND LINTELS OF 0.2:1:12 MIX.  
 BRICK WORK: BLOCK BRICK SET IN C.M. 1:3.  
 ROOFING: PANTRY WITH TUBULAR TRUSS.  
 ROOFING: R.C.C. ROOF OVER LAB.  
 ROOFING: ROOF & WINDOWS, WALLING.  
 ROOFING: ROOF & WINDOWS, WALLING.  
 ROOFING: ROOF & WINDOWS, WALLING.  
 ROOFING: ROOF & WINDOWS, WALLING.  
 ROOFING: ROOF & WINDOWS, WALLING.

JOINERY DETAILS

AP	DESCRIPTION	SIZE
D	DOOR T.W. CHASED	5'0" X 7'0"
D1	T.W. FRAME PANNELED SHUTTER	5'0" X 7'0"
D2	T.W. FRAME PANNELED SHUTTER	3'0" X 7'0"
D3	T.W. FRAME PANNELED SHUTTER	2'6" X 7'0"
D4	T.W. FRAME PANNELED SHUTTER	4'0" X 7'0"
W	TOP HUNG STEEL CASEMENT SHUTTER	2'4" X 3'11"
W1	TOP HUNG STEEL CASEMENT SHUTTER	11'5" X 3'11" WITH 1/4" GLASS
W2	TOP HUNG STEEL CASEMENT SHUTTER	6'11" X 1'11"
W3	TOP HUNG STEEL CASEMENT SHUTTER	11'5" X 11'
W4	" " " " SHUTTER	8'6" X 3'0"
W5	" " " " SHUTTER	4'11" X 3'0"
W6	" " " " SHUTTER	4'0" X 3'0"
W7	SIDING " SHUTTER	3'11" X 3'11"
W8	TOP HUNG " SHUTTER	8'9 1/2" X 1'11"
W9	" " " " SHUTTER	2'5" X 3'0"
RIS	ROLLING SHUTTER EXCLUDING 5'0" X 7'0" THE BRIDGE	
W10	TOP HUNG STEEL CASEMENT SHUTTER	2'4" X 3'0"



Planning Permit No. ....  
**APPROVED**  
 SUBJECT TO THE CONDITIONS IN THIS OFFICE LETTER.  
 No. C2/25219/89 DATED 28/11/90  
 FOR MEMBER SECRETARY  
 MADRAS METROPOLITAN  
 DEVELOPMENT AUTHORITY  
 MADRAS 600 009.



SIG OF OWNER

*[Signature]*

SIG OF LIC SURVEYOR

M. MOHAN  
 CONSULTING ENGINEER  
 CORPORATION OF MADRAS  
 AVADI AMBATTUR TOWNSHIP  
 LICENCED SURVEYOR  
 M.M. CONSTRUCTION  
 NO. 1, N.T.H. ROAD,  
 AMBATTUR-53